



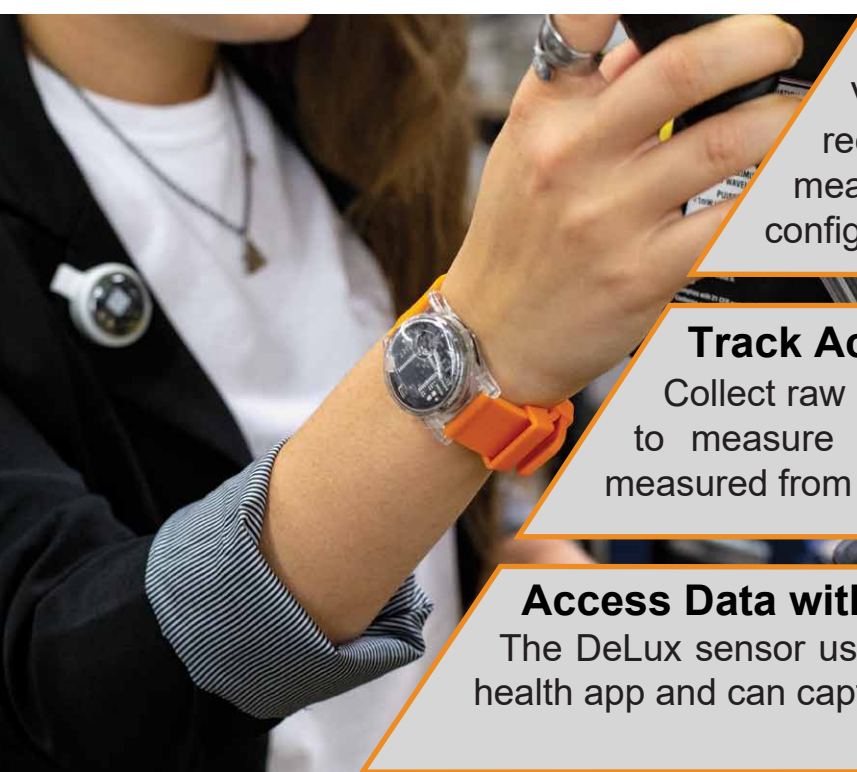
mSMART DeLux Sensor

Light & Actigraphy Wearables



Discretely Measure Light Exposure and Activity

The DeLux sensor is a low power lightweight sensor that can be used to monitor light exposure and actigraphy in patients. Activity is collected at the wrist and light exposure is monitored on the lapel. Data is shared with mobile apps via Bluetooth and can be stored and analyzed on the mSMART cloud-based platform.



Monitor Light Exposure

Visible light exposure lux levels are recorded all day. Light exposure can be measured using either the wrist or lapel worn configurations.

Track Activity

Collect raw data and activity indices that can be used to measure activity and sleep patterns. Activity is measured from our wrist-mounted sensor.

Access Data with a Mobile App

The DeLux sensor uses Bluetooth to send data to your mobile health app and can capture and store up to six weeks of data.



Researcher Value



Customizable Data

The sensor can be configured to adjust measurement rates and to provide raw or averaged data.

Customizable Research

The sensor can be used with either the mSMART DeLux Sensor App, or integrated with a custom application designed for your needs.

Discrete

The small size and design of the sensors facilitates patient compliance.

Specifications

Size: ----- 32 x 12 mm Comms: ----- BLE 5.0

Weight: ----- 12 g Data Storage: -- 8 Mbits

Battery: ----- CR2032 Accelerometer: Up to +/-

Battery Life: ----- 4 wk 8G, 400Hz, 8 bits/axis

Light Sensor: R(645nm) RTC: Keeps time up to

G(575nm), B(460nm), 2 hours with no battery

White 16 bits/channel

8248 lux

Configurable Settings

Actigraphy: ----- On/Off Light Sensor: ---- On/Off

Rate (Hz): 50, 25, 10, 1 Rate (Hz): ----- 10, 1

Sensor Average Rate: ----- 10Hz, 1 Hz, 30s, 60s

Bluetooth Low Energy Settings

Timeout: ----- 10s, 30s Cnect Gestures: On/Off

Auto Connection Rate: ----- None, 1 min, 5 min, 1 hr

Features

Light Sensor

The DeLux sensor measures light exposure data to calculate color temperature and illuminance.

Actigraphy Monitor

Raw accelerometer data is recorded at configurable rates. Data can be used to create an activity index to identify sleep patterns.

Replaceable Cell Battery

The DeLux sensor is powered from a replaceable coin cell battery to avoid charging downtime.

Multiple Wear Options

The watch can be worn for actigraphy and light sensing. The lapel clip is ideal for measuring light exposure near a user's eye.

BLE Communications

The BLE module can be used with most mobile devices to collect sensor data and manage the device configuration.

Mobile Application Support

A data collection app is provided with the DeLux sensors. The DeLux sensor can be integrated with your custom application.